

RESTORING MARY'S CHURCH

BEVERLEY

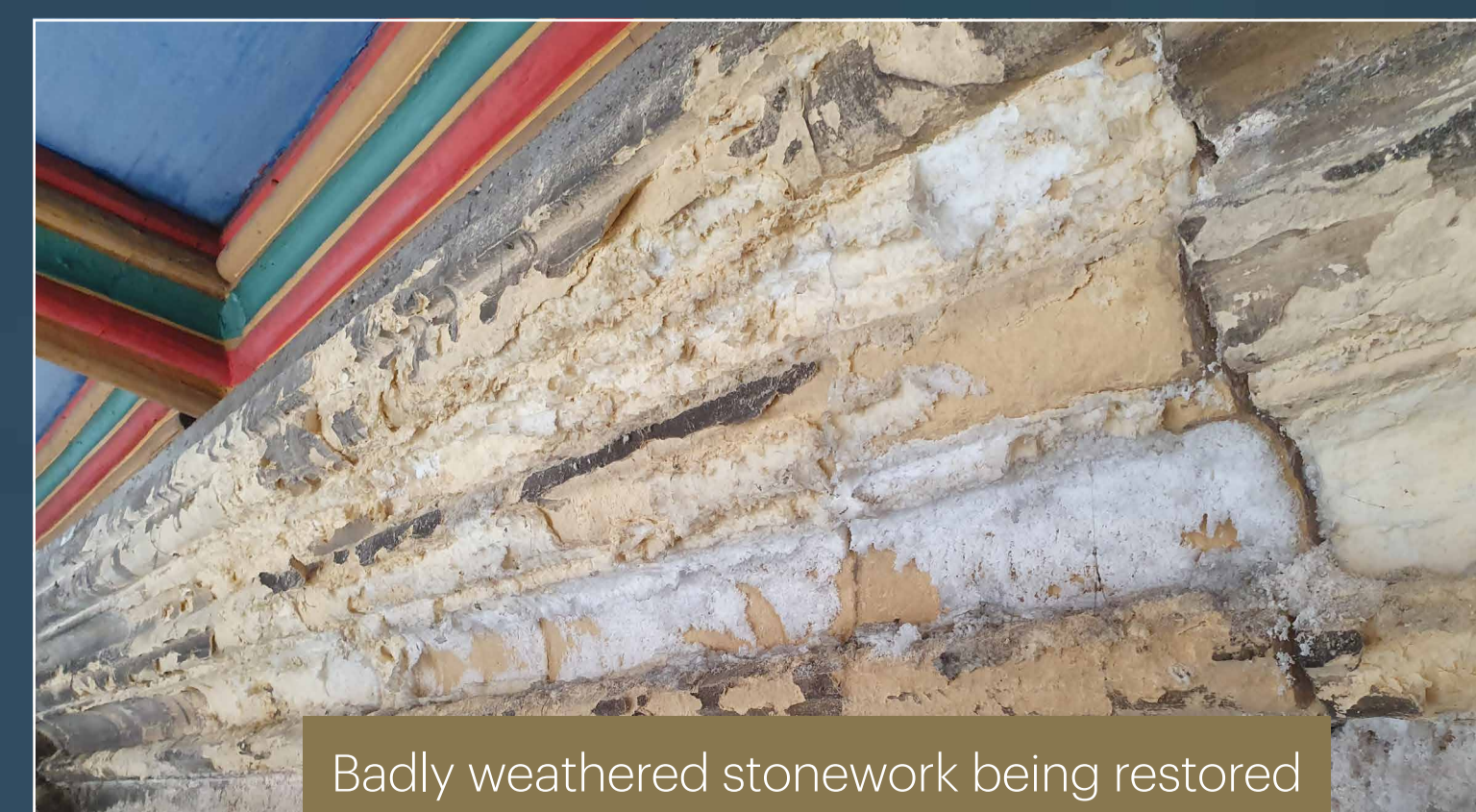
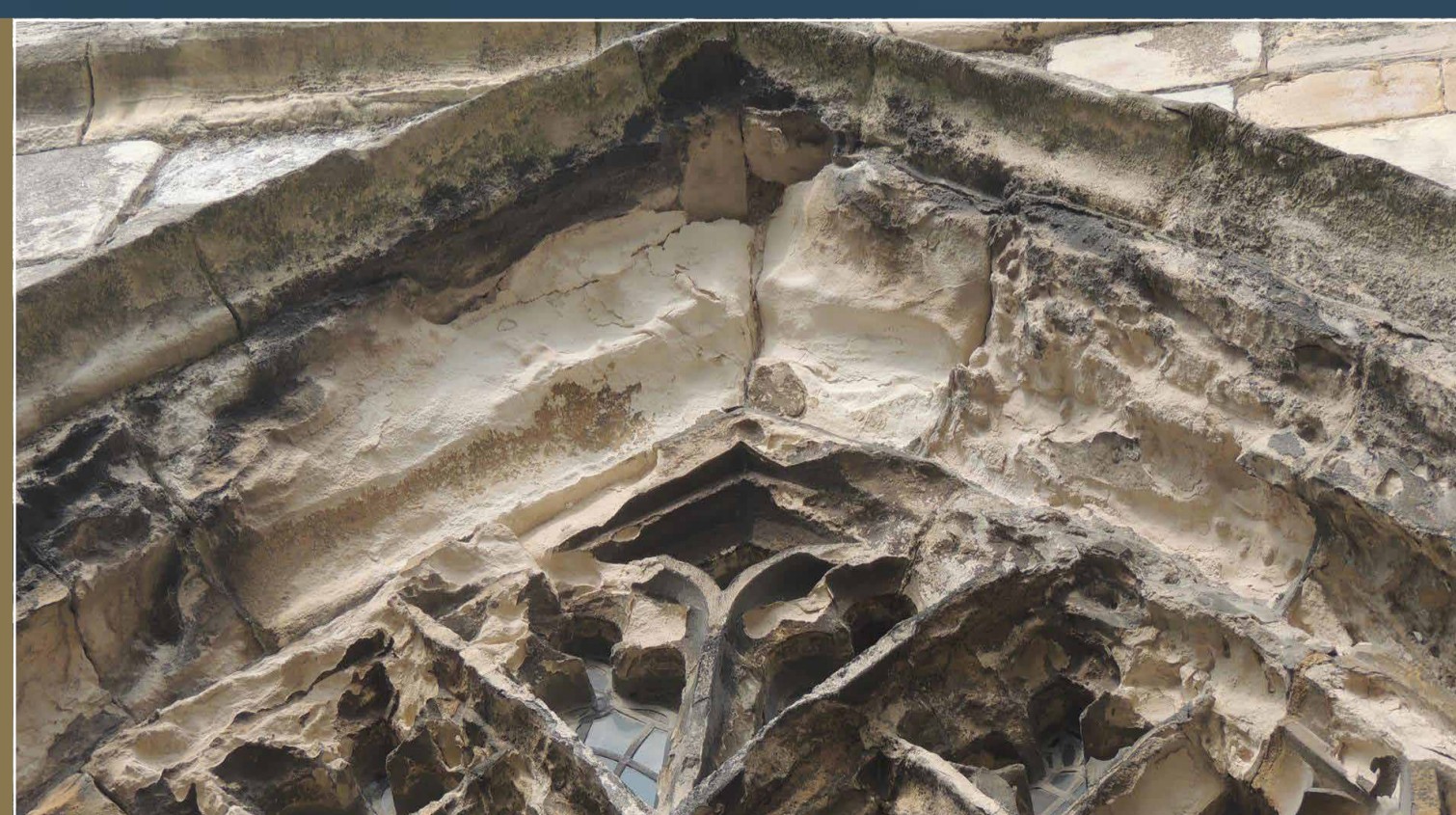
For centuries, **St Mary's Church** has been home to extraordinary carvings.

On its ceilings are more than 600 medieval and Tudor carvings known as roof bosses. Among this huge collection are kings, saints, brewers, angels, lions, wrestlers, unicorns, mermaids and musicians! Each and every one tells a story.

But they are in danger because the church's stonework is crumbling, letting water get inside the building.



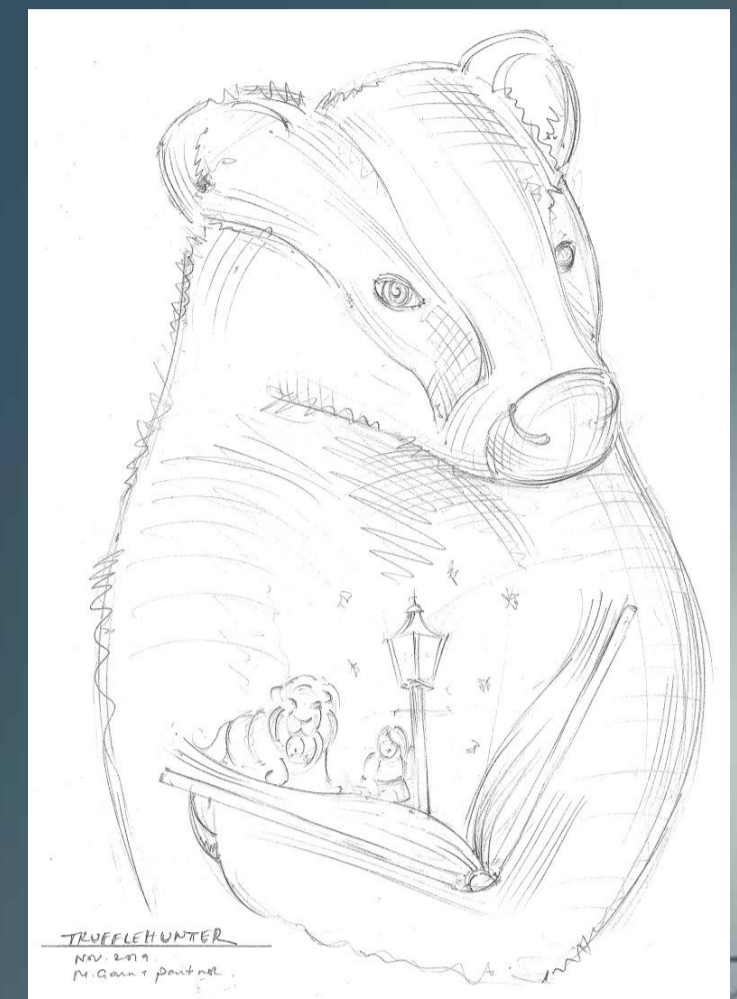
Thanks to a National Lottery Heritage Fund grant of £421,400 a team of skilled stonemasons are saving one of the most vulnerable areas of the church – where you see the scaffolding today.



Badly weathered stonework being restored

Some of the external stone carvings on this part of the building have eroded away completely, so in 2020 fourteen new ones are being made.

Inspired by design ideas from East Riding College students, we decided to base the new carvings on characters from The Chronicles of Narnia by CS Lewis. These enchanting stories – of Aslan, the White Witch, talking beasts and magical lands – are ranked among the top children's literature of all time.



Designed and handmade by craftsmen at Matthias Garn Master Mason & Partner near York, out of Magnesian Limestone from a quarry in Tadcaster, the new carvings will be displayed here over the summer – a few at a time – before they are fixed high up on the church.

Images based on The Chronicles of Narnia by CS Lewis® copyright CS Lewis Pte Ltd. Narnia® is a registered trademark of CS Lewis Pte Ltd.

WIN A BADGE!

Complete our holiday challenge to see all of the carvings displayed here and win a badge.

The display changes every fortnight. Download the activity sheet from our website using the QR code in the windows. All correct entries will also be entered into a prize draw to win a hard back box set of all 7 books in the Narnia series. Good luck!

**Supported by
The National Lottery**

